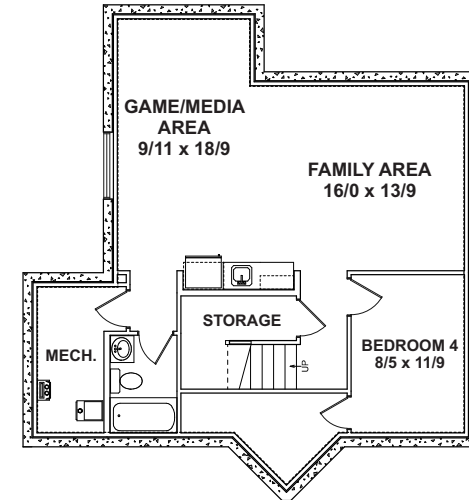
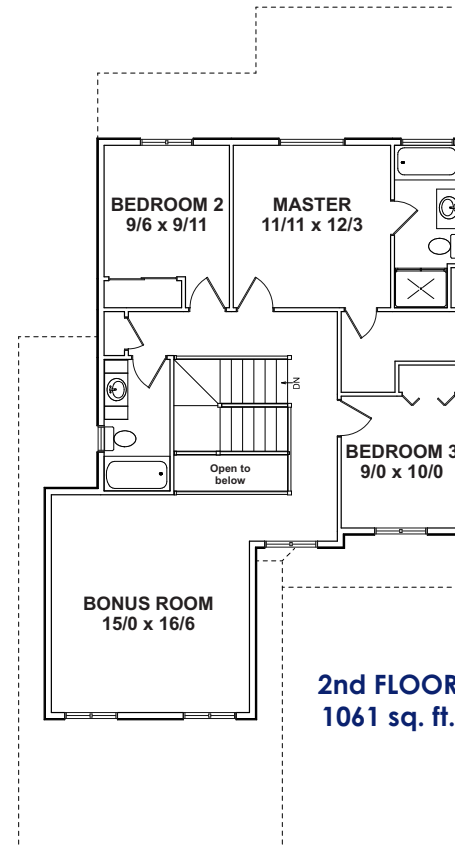
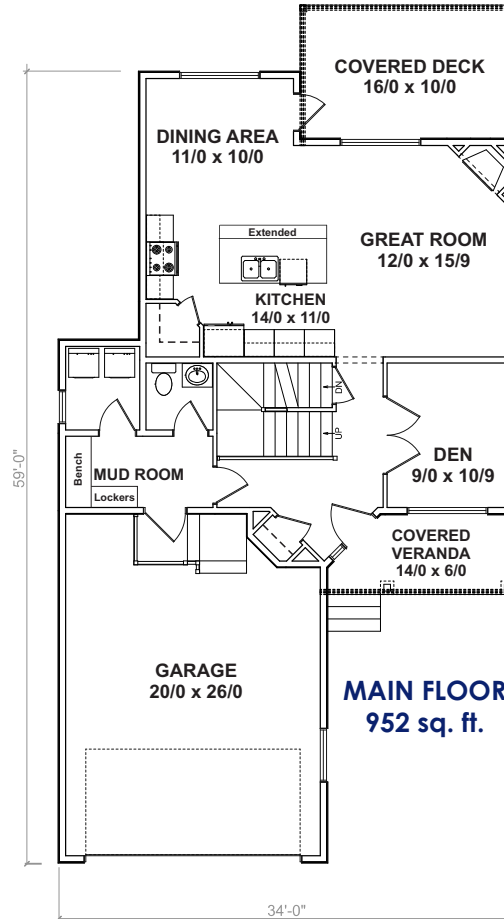




*Artist rendering, not exact.

- 2013 sq. ft. 2-Storey
- 3 bedrooms + den
- 2.5 bathrooms
- Large bonus room above garage
- 20' x 26' attached garage
- 16' x 8' overhead garage door
- Sumps in garage
- 9' walls on main level
- Stainless steel 4 appliance package
- Ensuite with tub and shower
- High-efficient tankless water system
- High-efficient 95% 2-stage furnace
- 8' 4" walls in basement
- Roughed-in under slab heat in basement
- SunStop argon filled R4.17 windows
- 16' x 10' covered deck with aluminium railing
- Exterior accent features



FOR SALE

TrueLineHomes.com
403.341.5933

Own today for
\$599,900*



TRUE-LINE ESSENTIALS ...

- Generous allowance for cabinets, flooring, lighting & wall tile
- 11 interior door styles to select from
- 5 finishes for door knobs or levers to select from
- Multiple styles of bathroom hardware to select from
- 1 main & 1 accent colour of high quality paint
- Oak or MDF base & case
- Full height tiled kitchen backsplash
- Waterline to fridge
- Low flush toilets
- Drip-free bathroom fans
- Roughed in vacuum system
- TV & phone outlets in all bedrooms & living areas
- Christmas light plugs in soffit with switch in front closet
- 8'4" foundation walls
- 6 mil poly under basement slab
- 16" on centre silent floor system
- Premium sub flooring; glued & nailed
- Poured concrete driveway & sidewalks
- Rock accents on exterior
- 30-year IKO fibreglass shingles
- 95% High-efficient 2-stage DC variable speed furnace
- Weather mate house wrap
- Red seal taped windows & foam insulated edges
- R12 insulation in the basement frost walls
- Insulated rim board R14
- HS4A dual-1 Sunstop argon filled R-4.17 windows

CHOICE FEATURES IN THIS HOME ...

- Gas fireplace on main level
- Upgraded vinyl plank flooring
- Upgraded maple mocha cabinets
- Upgraded lighting
- Quartz on kitchen island
- Stainless steel 4 appliance package
- 9' walls on main level
- Custom mud room bench
- High-efficient tankless water system
- Custom blinds package
- Roughed-in under slab heat in basement
- 16' x 10' covered deck with aluminium railing
- Exterior accent features
- Covered front veranda with precast concrete step
- Glass railing on front veranda
- Spider insulation
- Sumps in garage

**FOR
SALE**

Purchase this home today: \$599,900*
(including lot & net GST)

TrueLineHomes.com
403.341.5933



Central Alberta
Trust Safety Value



The Alberta
New Home
Warranty
Program

