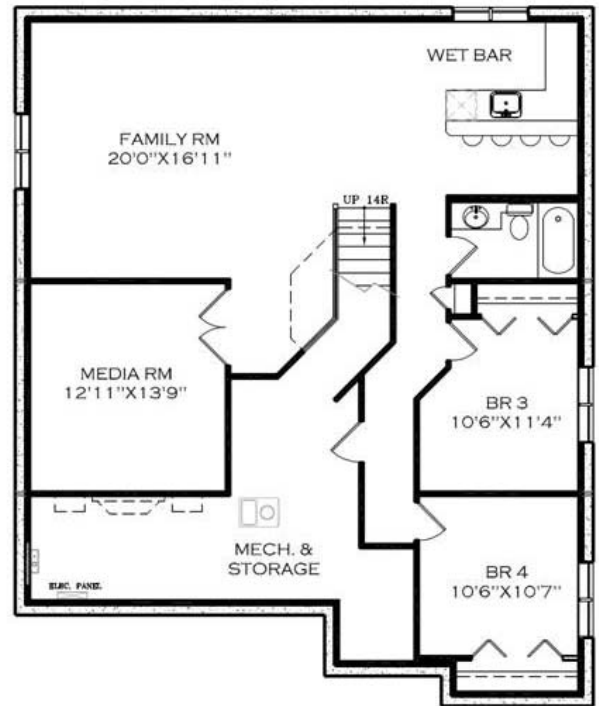
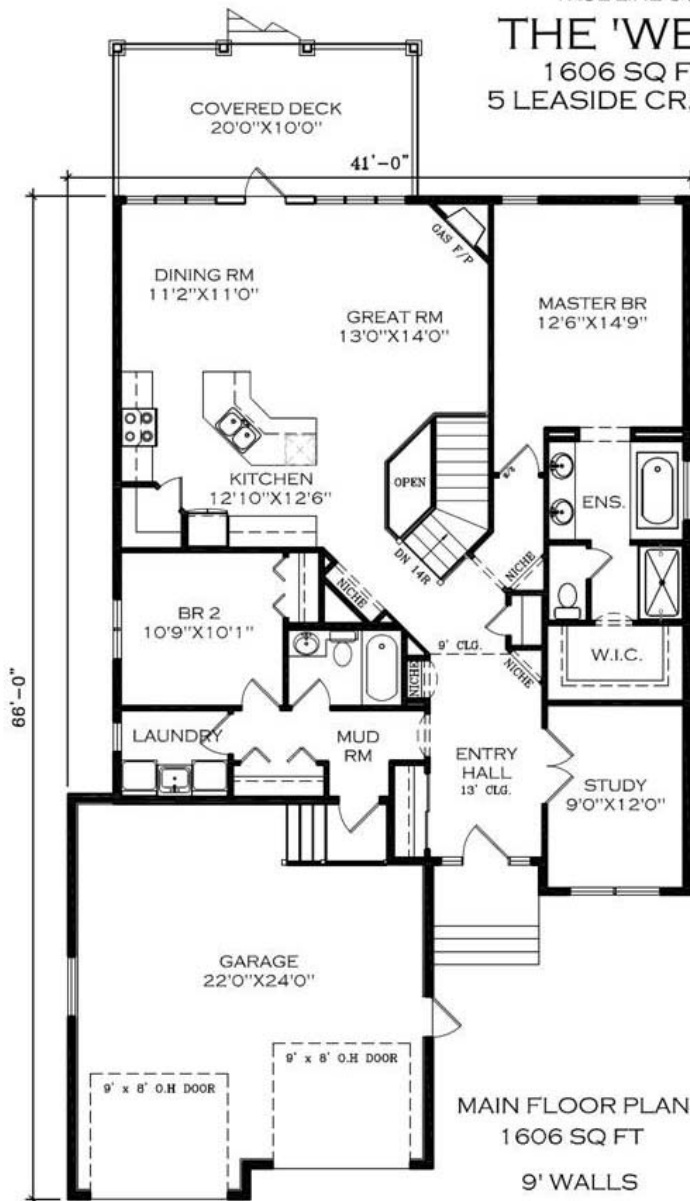




SYLVAN LAKE SHOWHOME  
TRUE-LINE CONTRACTING LTD.

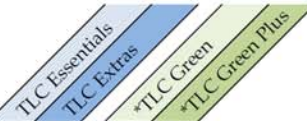
**THE 'WESTWOOD'**  
1606 SQ FT BUNGALOW  
5 LEASIDE CR, SYLVAN LAKE, AB



BASEMENT DEVELOPMENT  
APPROX 1261 SQ FT

# Quality is Priceless

5 Leaside Crescent, Sylvan Lake



<b>Interior Features</b>					
Custom Cabinets-Birch Smoked Ebony with Antique White Finish	✓				
One Main & One Accent Paint Color (with Low V.O.C's)	✓			✓	
Round Corners on Interior Walls	✓				
Tiled Vanity Backsplash with a Row of Tiles Around the Tub	✓			✓	
Full Tiled Kitchen Backsplash	✓			✓	
Wire Shelving in Closets	✓			✓	
Granite Counter Tops		✓			
Hardwood and Tile		✓			
Wet Bar in Basement		✓			
Window Coverings and Blinds		✓			
<b>Exterior Features</b>					
Poured Concrete Front Walks	✓				
Rock Accents on Exterior	✓				
Weather Mate House Wrap	✓			✓	
Maintenance Free Exterior with Vinyl Siding	✓				
Aluminum Exterior Cladding and Trim	✓			✓	
Shingles are IKO Fiberglass 30-Year	✓			✓	
Insulated Rim Board R-14	✓			✓	
Black Dirt Supplied and Leveled	✓			✓	
Landscaping					
10'x20' Covered Rear Deck with Decksmart		✓			
<b>Garage 24' x 26'</b>					
Garage Door Opener with Two Remotes	✓				
Poured Concrete Driveways	✓				
Walls Insulated & Boarded	✓				
<b>Construction Details</b>					
8'4" Foundation Walls	✓				
6 Mil Poly under Basement Slab	✓				
16" On Center Silent Floor System, with LVL Beams	✓			✓	
3/4" Gold Sub Flooring; Glued and Nailed	✓			✓	
7/16" OSB Sheeting on Roof	✓			✓	
Argon Filled, Dual Pane PVC Window's R 2.88 Energy Star Rated	✓			✓	
Red Seal Taped Windows (Moisture Barrier) & Foam Insulated Edges (eliminates drafts)	✓			✓	
R-20 Insulation in the Walls	✓			✓	
R-40 Insulation in the Ceiling	✓			✓	
R-12 Insulation in the Basement Frost Walls	✓			✓	
R-22 Insulation in the Exterior Walls		✓			✓
9' Walls on Main Floor		✓			
HS4A Dual I-SunStop Argon Filled R-4.17 Windows Energy Star Rated		✓			✓
R-50 Insulation in the Ceiling		✓			✓
<b>Electrical</b>					
Christmas Light Soffit Plug with Switch in Front Closet	✓				
TV, & Phone Hook-Ups in each Room	✓				
Primary Exhaust Fan	✓				
Roughed in Vacuum System	✓				
<b>Plumbing</b>					
Shut Off Valves on all Sinks, Toilets and Exterior Taps	✓				
Drip-Free Bathroom Fans	✓				
Moen Single Lever Taps Throughout House	✓			✓	
Dual Sinks in Ensuite		✓			
Jet Tub in Ensuite		✓			
Dual Shower Heads in Ensuite		✓			
Continuous Hot Water System		✓			✓
<b>Heating</b>					
High Efficient Furnace	✓			✓	
Programmable Thermostats	✓			✓	
Basement Slab Heating		✓			
Gas Fireplace		✓			

as You See it (Including Lot, Legal Fees & GST): \$613,420.00  
 in a Different Location (Plus Lot, GST & GST Rebate): \$434,310.00  
 Own This Home as Low as: Ask Us  
 Basement Development: Ask Us

\* These features are Built Green eligible.

Effective 4 June 2010