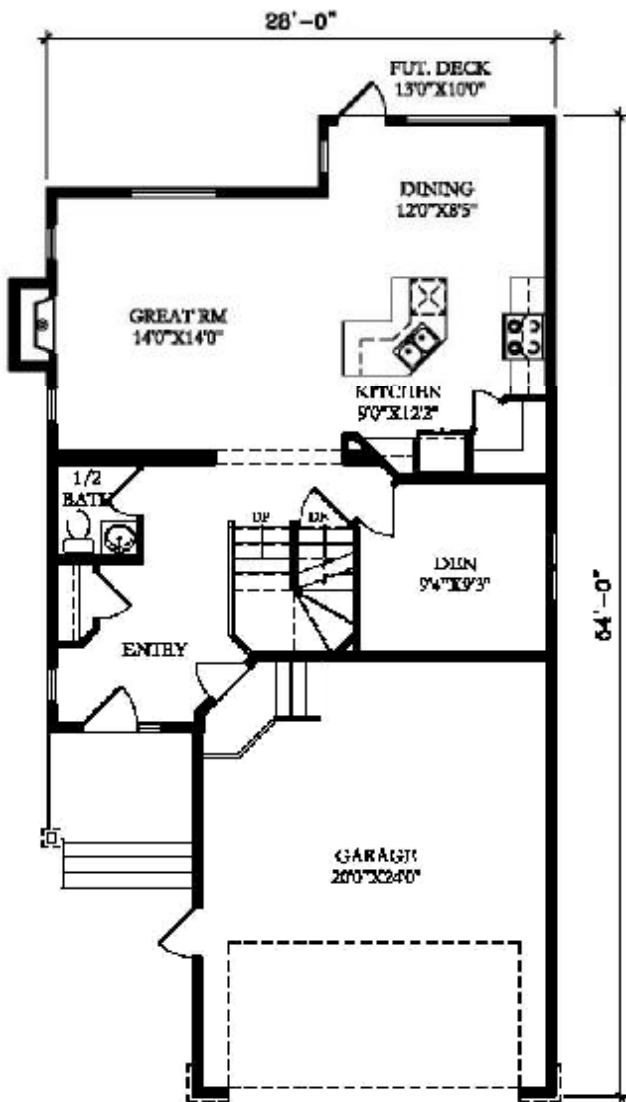


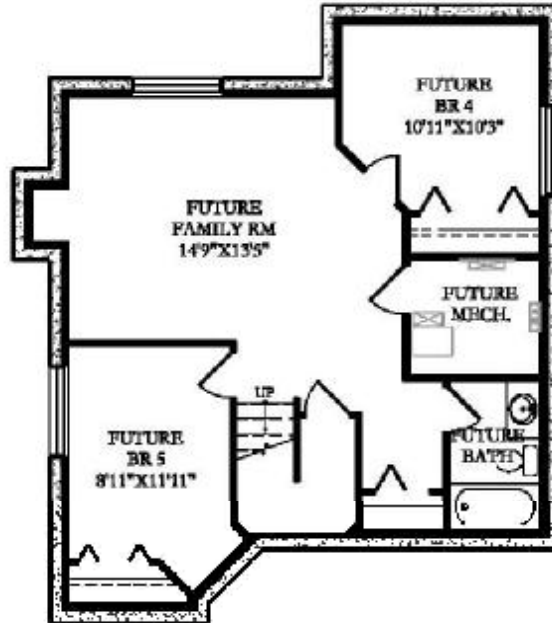


Purchase this Home for \$449,900
includes appliances, lot & GST

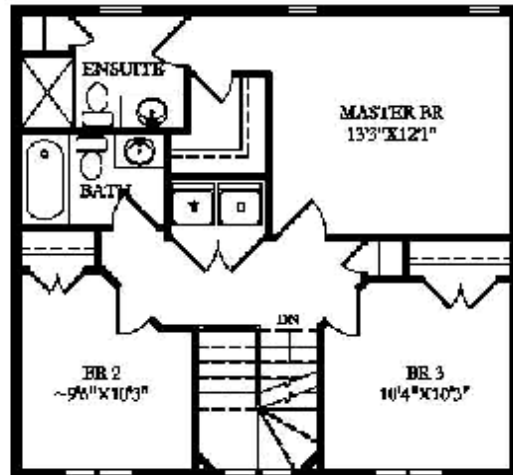
6 TURNER CRESCENT
1498 SQ' 2 STOREY
RED DEER, ALBERTA



MAIN FLOOR PLAN
820 SQ. FT.



FUTURE LOWER DEVELOPMENT
APPROX. 566 SQ. FT.

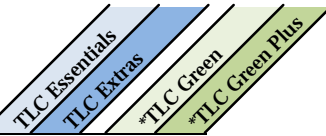


UPPER FLOOR PLAN
678 SQ. FT.

Build this plan as low as \$269,010
*plus lot & GST

Quality is Priceless

6 Turner Crescent, Red Deer



Interior Features (1495 Sq.ft.)

Custom Cabinets (Hickory - Burnt Sienna Finish)	✓			
One Main & One Accent Paint Color (with Low V.O.C's)	✓		✓	
Round Corners on Interior Walls	✓			
Tiled Vanity Backsplash with a Row of Tiles Around the Tub	✓		✓	
Full Tiled Kitchen Backsplash	✓		✓	
White Melamine Shelves in Closets	✓		✓	
Appliance Package (Fridge, Stove, Dishwasher & Microwave (OTR))		✓		
Maple Hardwood Flooring		✓		
Tile Flooring		✓		
Granite Countertops		✓		
Oak Railing with Metal Spindles		✓		
Upgraded Woodwork and Finishings		✓		

Exterior Features

Poured Concrete Front Walks	✓			
Rock Accents on Exterior	✓			
Weather Mate House Wrap	✓		✓	
Maintenance Free Exterior with Vinyl Siding	✓			
Aluminum Exterior Cladding and Trim	✓		✓	
Shingles are IKO Fiberglass 30-Year	✓		✓	
Insulated Rim Board R-14	✓		✓	
Black Dirt Supplied and Leveled	✓		✓	
Covered Front Entry		✓		

Garage (24'x20')

Garage Door Opener with Two Remotes	✓			
Poured Concrete Driveways	✓			
Walls Insulated, Boarded & Fire Taped	✓			

Construction Details

8'4" Foundation Walls	✓			
8' Walls on Main Floor	✓			
6 Mil Poly under Basement Slab	✓			
16" On Center Silent Floor System, with LVL Beams	✓		✓	
3/4" Gold Sub Flooring; Glued and Nailed	✓		✓	
7/16" OSB Sheeting on Roof	✓		✓	
Red Seal Taped Windows (Moisture Barrier) & Foam Insulated Edges (eliminates drafts)	✓		✓	
R-12 Insulation in the Basement Frost Walls	✓		✓	
R-22 Insulation in the Exterior Walls		✓		✓
R-50 Insulation in the Ceiling		✓		✓
HS4A Dual 1-SunStop Argon Filled R-4.17 Windows Energy Star Rated		✓		✓

Electrical

Christmas Light Soffit Plug with Switch in Front Closet	✓			
TV, & Phone Hook-Ups in each Room	✓			
Fiber Cabling to the Home	✓			
Primary Exhaust Fan	✓			
Roughed in Vacuum System	✓			

Plumbing

Shut Off Valves on all Sinks, Toilets and Exterior Taps	✓			
Drip-Free Bathroom Fans	✓			
Moen Single Lever Taps Throughout House	✓		✓	
Continuous Hot Water System		✓		✓

Heating

High Efficient Furnace	✓		✓	
Programmable Thermostats	✓		✓	
Roughed in Basement Slab Heating		✓		
Gas Fireplace		✓		

6 Turner Crescent as You See it : \$449,900.00

(Including Fridge, Stove, Lot, Legal Fees & GST)

Build 6 Turner Crescent in a Different Location (Plus Lot, GST & GST Rebate): \$294,795.00

(Not Including Fridge, Stove, Lot, Legal Fees, GST & GST Rebate)

Own This Home as Low as: \$269,010.00

(Built with Standard True-Line Features, Fridge, Stove, Lot, Legal Fees, GST & GST Rebate)

Basement Development: Ask Us